

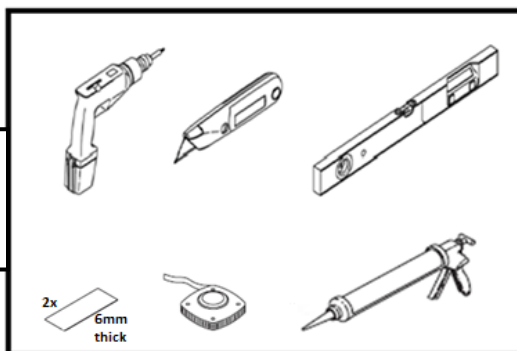
Installation Manual – VITRAL SkyVision Linear Fixed

Trækarme skal altid opbevares tørt/ Wooden upstands must always be kept dry
Placer aldrig produktet direkte på et varmt tag. Risiko for skade på glas/ Never place product directly on a warm roof. Risk of glass damage



Sådan monteres SkyVision Linear Fixed/ How to install SkyVision Linear Fixed

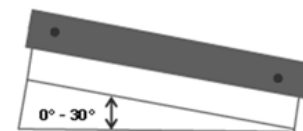
Værktøj som du behøver / Tools you need



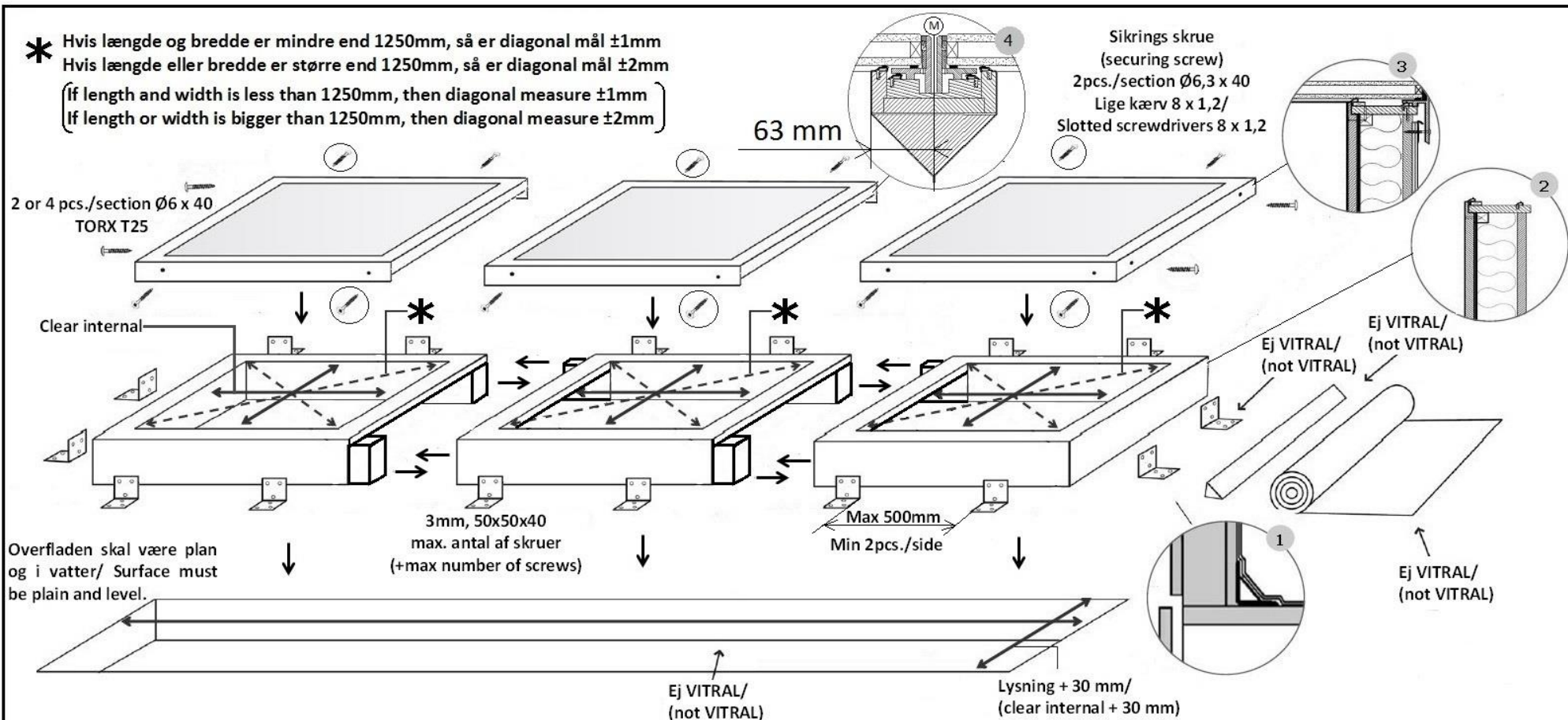
Før du begynder / Before you begin

Vigtigt: Hvis taghældningen er under 5°, anbefales det at der bygges en kile under produktet. Max taghældning 30°

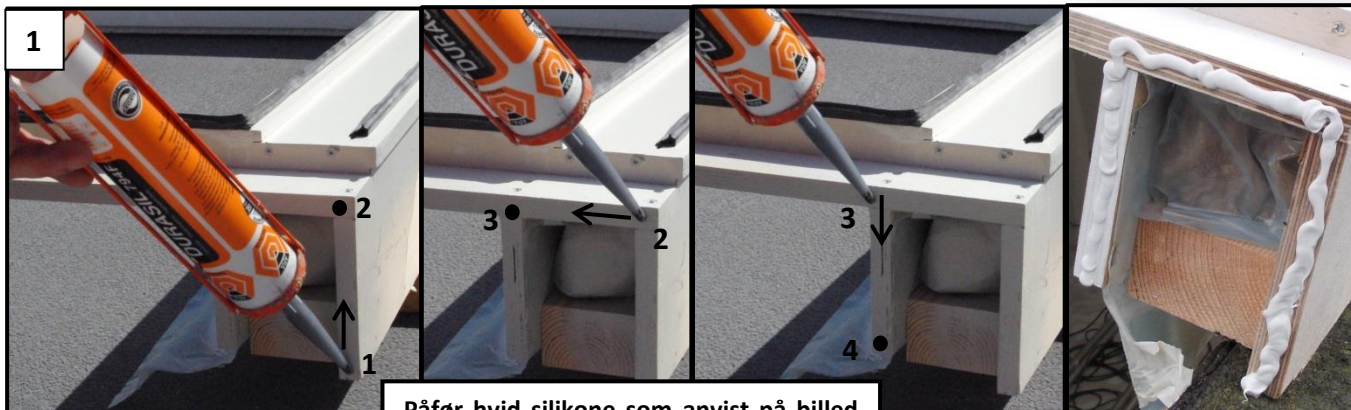
Important: If the roof pitch is less than 5°, we recommend that a wedge is built underneath the product. Max roof pitch is 30°



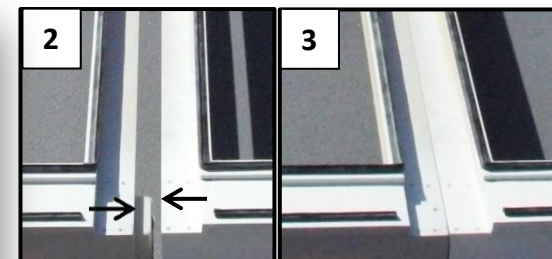
- * Hvis længde og bredde er mindre end 1250mm, så er diagonal mål $\pm 1\text{mm}$
Hvis længde eller bredde er større end 1250mm, så er diagonal mål $\pm 2\text{mm}$
(If length and width is less than 1250mm, then diagonal measure $\pm 1\text{mm}$
If length or width is bigger than 1250mm, then diagonal measure $\pm 2\text{mm}$)



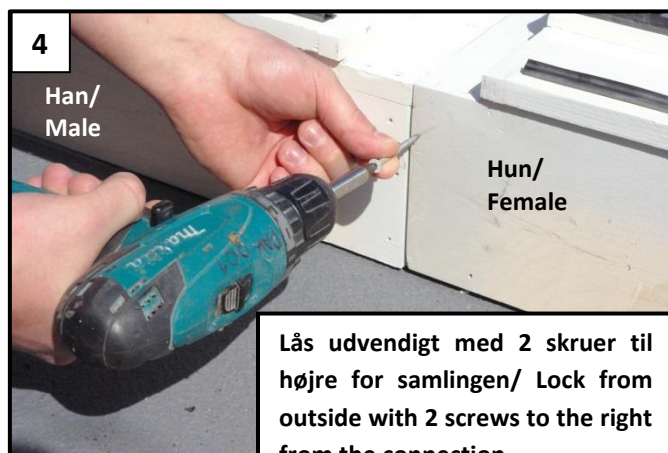
Montering af træramme/ Installation of wooden frame



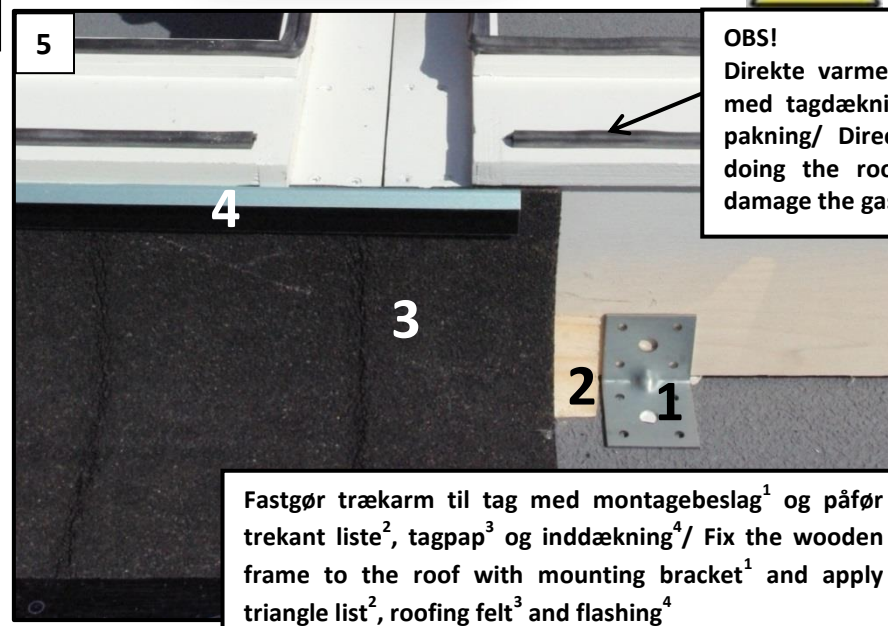
Påfør hvid silikone som anvist på billed og i begge sider/ Apply white silicone in both sides as shown in the pictures



Skub rammer sammen/ Push frames together.



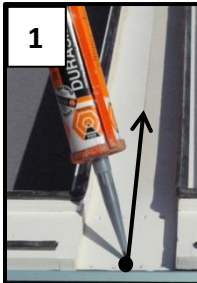
Lås udvendigt med 2 skruer til højre for samlingen/ Lock from outside with 2 screws to the right from the connection.



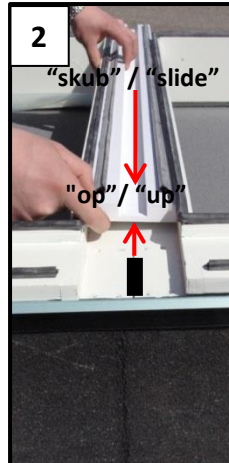
OBS!
Direkte varme i forbindelse med tagdækning kan skade pakning/ Direct heat when doing the roofing felt can damage the gasket

Fastgør træarm til tag med montagebeslag¹ og påfør trekant liste², tagpap³ og inddækning⁴/ Fix the wooden frame to the roof with mounting bracket¹ and apply triangle list², roofing felt³ and flashing⁴

Montering af dræneprofil/ Installation of drain profile



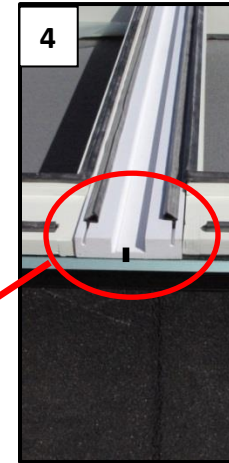
1
Påfør hvid silikone langs samling/ Add white silicone along connection



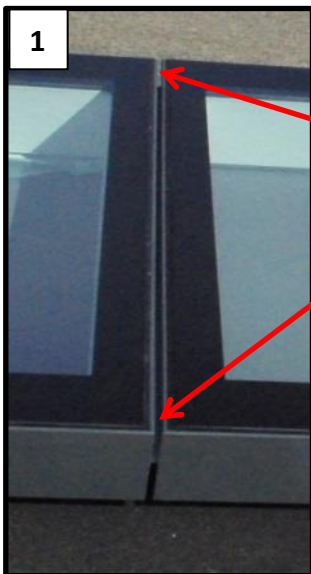
2
"skub" / "slide"
"op" / "up"
Indfør dræneprofil i løftet tilstand til korrekt position og pres ned/ Slide in the drain profile in lifted condition to the correct position and press down



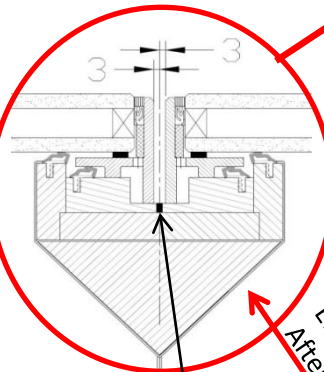
3
Påfør hvid silicone mellem inddækning og dræneprofil/ Add white silicone between flashing and drain profile



Montering af aluminiumsrammer/ Installation of aluminum frames

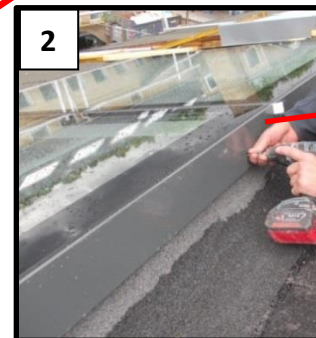


1
Anvend 6mm plade i begge sider for kontrol af korrekt placering/ Use 6mm plates in both sides for control of correct placement

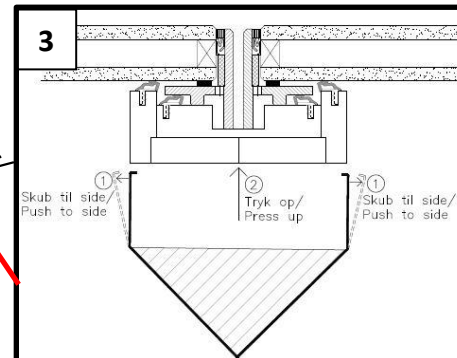
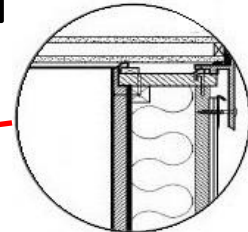


Anvend center mærke til kontrol af placering/ Use center mark for check of placement

Efter monteringen/ After mounting



2
Fastgør alu ramme med skruer/ Fix the alu frame with screws



3
Montering af indvendig inddækning, se tegning/ Mounting of inner flashing, see drawing



VITRAL A/S
Lyfa Parken
Måløv Byvej 229
DK-2760 Måløv, Denmark

Phone: +45 47 18 01 00
Fax: +45 47 18 01 11
E-mail: info@vital.dk
web: www.vital.dk
